

# Coco Erosion Control Blanket

100% Biodegradable Double Sided Erosion Control Blanket

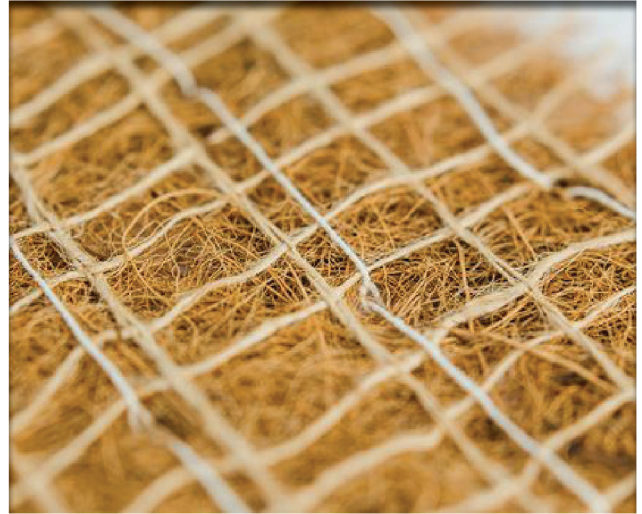


## Description

Coco Erosion Control Blanket is an FHWA Type IID temporary erosion control blanket that is used to control erosion of Greenroof-Roofscapes® media and plantings on both flat and low-sloped installations. It is composed of a matrix of 100% Coconut/Coir Fiber distributed evenly between two layers of biaxially oriented Jute netting. The matrix is mechanically bonded (stitched) using biodegradable thread.

## Uses

Coco Erosion Control Blankets are designed to protect and stabilize slopes and channels from erosive forces like wind and water, providing the time required for proper greenroof plant establishment. The blanket allows the passage of sunlight and moisture, providing the optimum environment for plant root development.



## Coverage

8' x 112.5'  
900 sq/ft

16' x 112.5'  
1800 sq/ft

**NOTE:** Functional longevity of Coco Erosion Control Blanket is roughly 18 months, depending on soil and climatic conditions.

## Properties

Description	Measurement	Test Method
Mass/Unit Area	0.56 lbs/yd <sup>2</sup>	ASTM D-6475
Thickness	217 Mils	ASTM D-6525
Ground Cover/Light Penetration (% Passing)	87% GC - 13% LP	ASTM D-6567
Color	Natural	
Tensile Strength (MD/TD)	19 lb/in / 14.2 lb/in	ASTM D-6818
Elongation (MD/TD)	9.7% / 13.7%	ASTM D-6818
Velocity (unvegetated)	10 ft/s	ASTM 6460
Shear Stress (unvegetated)	2.6 lb/ft <sup>2</sup>	ASTM 6460
C Factor	0.027	ASTM 6459
Roll Sizes	8' x 112.5' 16' x 112.5'	

### NOTE:

- 1) Property Values have been compiled since 2007 & are subject to change without notice.
- 2) Permissible Velocity, Shear Stress, and C Factor have been obtained through large scale test programs featuring specific soil types, vegetation classes, flow conditions, anchor methods, and failure criteria. These conditions may not be relevant to every project nor can they be replicated by other manufacturers. Please contact your Barrett representative for farther information.
- 3) Marv Values represent the minimum average roll values from random samples taken in accordance with NTPEP & AASHTO requirements.
- 4) It is the responsibility of the project owner/engineer to determine the ultimate suitability of Coco Erosion Control Blanket for their project.

LIMITED WARRANTY: Barrett warrants its Products to be free of defects in materials, but makes no warranty as to appearance or color. Since methods of application and on-site conditions are beyond our control and can affect performance, Barrett makes no other warranty, expressed or implied, including warranties of MERCHANTABILITY and FITNESS FOR A PARTICULAR PURPOSE, with respect to The Barrett Company, LLC. Barrett to replace or to refund the purchase price of the quantity of Barrett proven to be defective, and Barrett shall not be liable for any loss or damage.

22.1

Document: KF-01060



800 | 647 | 0100  
F 908 | 647 | 0278