

Greenroof-Roofscapes®

# SpiralJack Adjustable Pedestals & Components



## DESCRIPTION

Vegetated roofs have different depths, necessitating a flexible pedestal system that can support differing heights. Barrett's Greenroof-Roofscapes® SpiralJack Pedestal system:

- Has a **height range from 5/64" -42 5/8"** for use with concrete, wood, porcelain, and stone pavers or tiles
- Features **slope correction up to 4%**
- Meets **all necessary spacing sizes**, dependant on your paver size and spacing requirements
- Provides **flexibility**; all components & accessories are easily inserted or removed from the pedestal
- Does not penetrate or compromise waterproofing membranes due to its **large flat base** and **rounded edges**



## PACKAGING

- Full Box
- 20 Boxes per Pallet

## TECHNICAL PROPERTIES

PROPERTIES	MEASUREMENT	TEST METHOD
Materials	Recycled Polypropylene <i>(resistant to mold, alkali, and bitumen)</i>	-
Base Diameter	7 43/64" (195mm)	-
Height Range	5/64" - 42 5/8" (2mm - 1083mm)	-
Slope Correction	0 - 4%	-
Spacer Tab Thickness	1/8" (3mm) 5/32" (4mm) 3/16" (5mm)	-
Compressive Resistance	1,984 lbs. minimum	-
Standard Kit	<ul style="list-style-type: none"> <li>• Pedestal Base</li> <li>• Pedestal Top</li> <li>• <b>PPC-TSP</b> Spacer Tab</li> <li>• <b>PPC-SHM-2</b> Neoprene Shims</li> </ul>	
Additional Components	<ul style="list-style-type: none"> <li>• <b>PPC-EXT</b> Adjustable Heights Extender</li> <li>• <b>PPC-TSC</b> Top Slope Corrector</li> <li>• <b>PPC-BSC</b> Bottom Slope Corrector</li> <li>• <b>PPC-BCL</b> Bearer Holder</li> <li>• <b>PPC-WUA-B</b> Basic Wind Uplift Assembly</li> <li>• <b>PPC-WUA-C</b> Concealed Wind Uplift Assembly</li> </ul>	

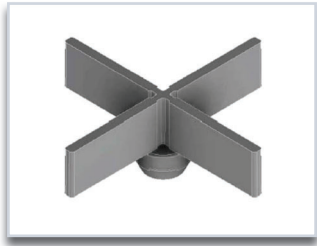


(800) 647-0100

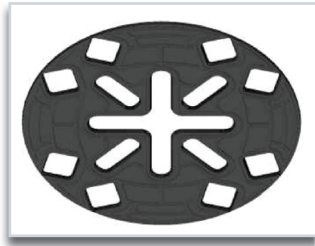


info@barrettroofs.com

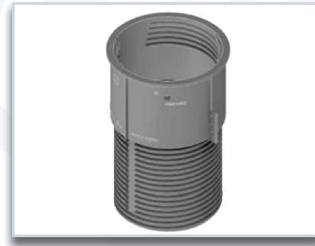
[barrettroofs.com](http://barrettroofs.com)



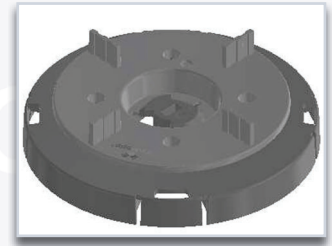
**Spacer Tab**  
312-PPC-TSP



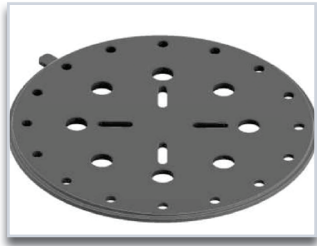
**Neoprene Shims**  
312-PPC-SHM-2



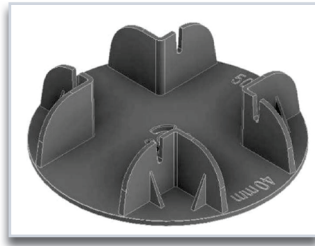
**Adjustable Height Extender**  
312-PPC-EXT



**Top Slope Corrector**  
312-PPC-TSC\*



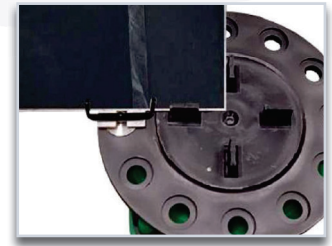
**Bottom Slope Corrector**  
312-PPC-BSC\*



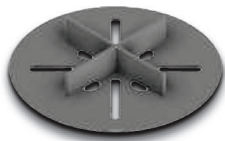
**Bearer Holder**  
312-PPC-BCL\*



**Basic Wind Uplift Assembly**  
312-PPC-WUA-B\*



**Concealed Wind Uplift Assembly**  
312-PPC-WUA-C\*



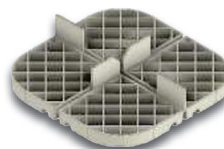
**5/64" (2 mm)**  
311-PPE-2



**1/4" (7 mm)**  
311-PPE-7



**1/2" (13 mm)**  
311-PPE-13



**5/8" (16 mm)**  
311-PPE-16

**26 7/8"-37"**  
(682-939 mm)  
311-PPE-682



**3/4"-1"**  
(18-25 mm)  
311-PPE-18

**1"-1 1/2"**  
(28-40 mm)  
311-PPE-28



**1 1/2"-2"**  
(36-51 mm)  
311-PPE-36



**2"-3 1/4"**  
(52-82 mm)  
311-PPE-52



**3 1/4"-5 1/4"**  
(82-135 mm)  
311-PPE-82



**5 1/4"-8 7/8"**  
(133-225 mm)  
311-PPE-133



**7 1/2"-11 1/2"**  
(189-293 mm)  
311-PPE-189



**10 1/4"-14 3/8"**  
(260-365 mm)  
311-PPE-260



**14 3/8"-20"**  
(364-507 mm)  
311-PPE-364



**18 1/2"-25 5/8"**  
(471-651 mm)  
311-PPE-471



**22 5/8"-31 1/4"**  
(576-795 mm)  
311-PPE-576



**31"-42 5/8"**  
(786-1083 mm)  
311-PPE-786

DOCUMENT: KF-07035 - 1



(800) 647-0100



info@barrettroofs.com

barrettroofs.com